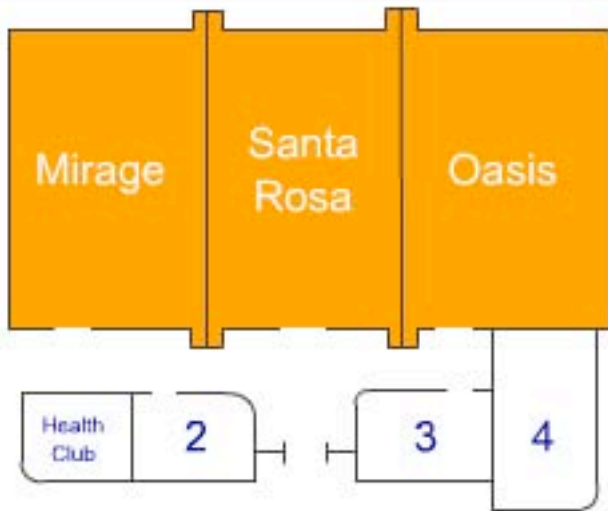


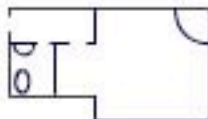
# Grand Ballroom

# CAPACITY



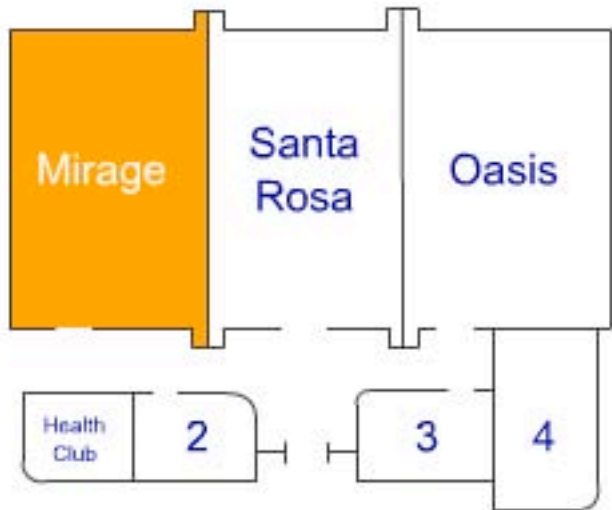
Size:	48' x 100'
Square Feet:	4,800
Banquet:	335
Reception:	380
Theater:	350
Schoolroom:	220
Conference:	N/A

## Club 100



## 1 Section

## CAPACITY



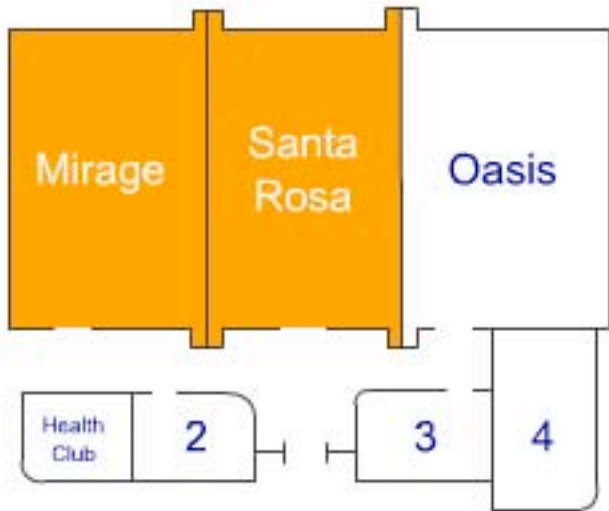
Size:	33' x 48'
Square Feet:	1,600
Banquet:	110
Reception:	125
Theater:	115
Schoolroom:	70
Conference:	110

## Club 100



## 2 Sections

## CAPACITY

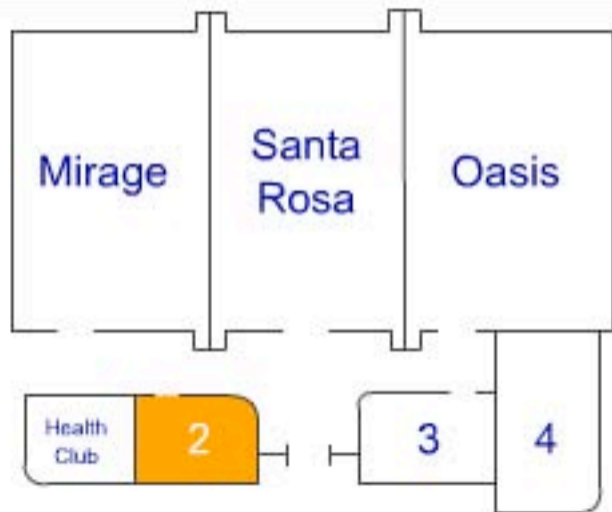


Size:	66' x 48'
Square Feet:	3,200
Banquet:	260
Reception:	250
Theater:	230
Schoolroom:	140
Conference:	220

## Club 100



## Room 2



## CAPACITY

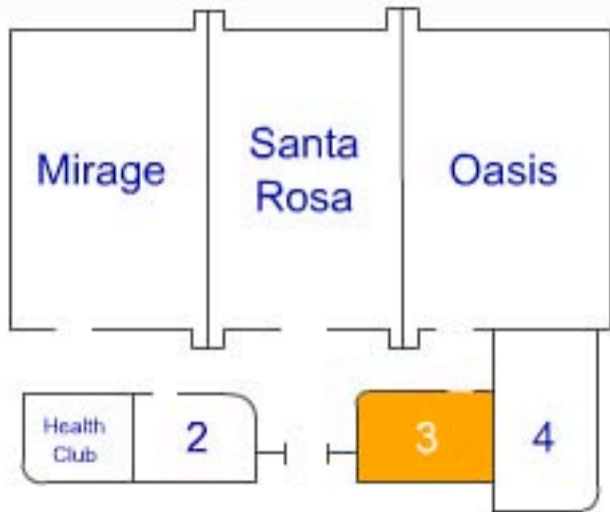
Size:	15' x 20'
Square Feet:	300
Banquet:	16
Reception:	30
Theater:	20
Schoolroom:	18
Conference:	16

## Club 100



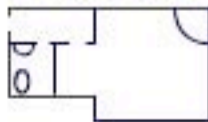
# Room 3

# CAPACITY

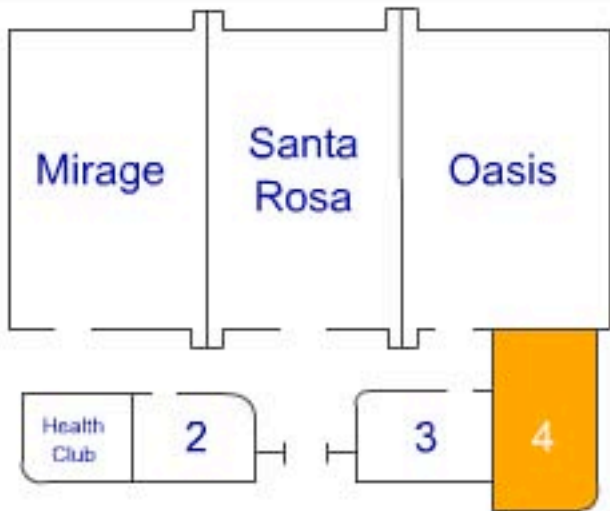


Size:	15' x 20'
Square Feet:	300
Banquet:	16
Reception:	30
Theater:	20
Schoolroom:	18
Conference:	16

## Club 100



## Room 4



## CAPACITY

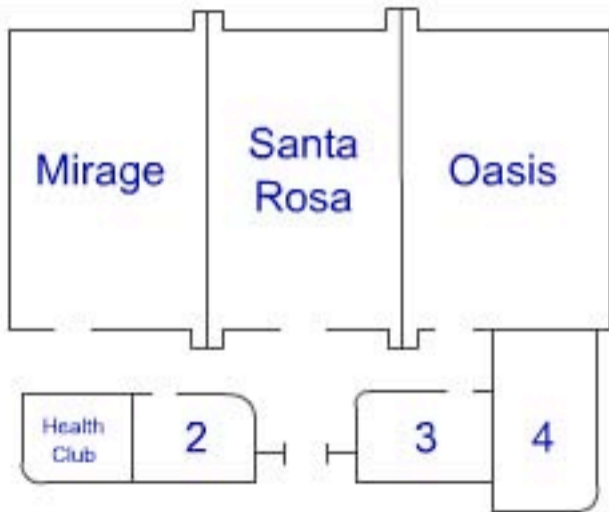
Size:	30' x 17'
Square Feet:	510
Banquet:	24
Reception:	30
Theater:	30
Schoolroom:	N/A
Conference:	24

## Club 100



# Club 100

# CAPACITY



Size:	30' x 17'
Square Feet:	510
Banquet:	24
Reception:	30
Theater:	40
Schoolroom:	24
Conference:	24

## Club 100

